

# GIANO

---

# N

---

# O

METAL

## GIANO

*Un classico.*

*Grazie al design originale che conferisce a Giano una forte personalità, coniugato con un'ampia gamma colori sia per la struttura metallica (Bianco, Alluminio, Nero) che per i piani di lavoro (smaltato Bianco o Nero per il cristallo, Acero, Rovere e Wengè per il legno), Giano è sinonimo di eleganza e tradizione.*

## GIANO

*A classic.*

*Thanks to the original design, which gives Giano a strong personality, combined with a wide selection of colours for both the metal frame (White, Aluminium and Black) and the worktops (glazed White or Black for glass, Maple, Oak and Wenge for wood), Giano is steeped in elegance and tradition.*

## GIANO

*Un classique.*

*Grâce au design original qui imprime une forte personnalité, et à une large palette de couleurs aussi bien pour la structure métallique (Blanc, Aluminium, Noir) que pour les plateaux (émaillé Blanc ou Noir pour le verre, Erable, Chêne et Wengé pour le bois), Giano est synonyme d'élégance et de tradition.*

GIANO  
la direzione

---





**GIANO METAL**  
la direzione



cm.180x90xh.72,5  
**S5600G**  
**Scrivania 180**  
**legno**  
Wood desk 180  
Bureau 180 en bois

cm.200x90xh.72,5  
**S5610G**  
**Scrivania 200**  
**legno**  
Wood desk 200  
Bureau 200 en bois

Fin: top



**AC**  
Acero  
Maple  
Erable

**RO**  
Rovere  
Oak  
Rouvre

**WE**  
Wengé

Fin: metal



**AL**  
Alluminio  
Aluminium

**BI**  
Bianco  
White  
Blanc

**NE**  
Nero  
Black  
Noir

**LA RIUNIONE**  
**Tavolo riunione**  
Meeting table  
Table de conference  
→ 229

**L'ARCHIVIAZIONE**  
**Contenitori Superflat**  
Superflat cabinet  
Superflat armoire  
→ 248

**L'ARCHIVIAZIONE**  
**Boiserie**  
→ 256

**85**



cm.180x90xh.72,5  
**S5500G**  
**Scrivanvia 180**  
cristallo  
Crystal desk 180  
Bureau 180 verre

cm.200x90xh.72,5  
**S5510G**  
**Scrivanvia 200**  
cristallo  
Crystal desk 200  
Bureau 200 verre



cm.90x60xh.72,5  
**C5650G**  
**Allungo scrivania**  
legno  
Wood extension desk  
Rallonge plateau bois

cm.90x60xh.72,5  
**S5750G**  
**Allungo scrivania**  
legno  
Wood extension desk  
Rallonge plateau bois

screen cm.130xh.27  
**C5070G**  
**Modesty**  
panel metallo  
Metal modesty panel  
Voile de fonde

GIANO METAL  
la direzione

Fin: top



**Bianco**  
**Smaltato**  
Enamelled white  
Emaillé blanc



**Nero**  
**Smaltato**  
Enamelled black  
Emaillé noir

Fin: metal



**Alluminio**  
Aluminium



**Bianco**  
White  
Blanc



**Nero**  
Black  
Noir

Fin: top



**Acero**  
Maple  
Erable



**Rovere**  
Oak  
Rouvre



**Wengé**

Fin: metal



**Alluminio**  
Aluminium



**Bianco**  
White  
Blanc



**Nero**  
Black  
Noir

87



01



02



03



04

**01**

cm. 13,7x4xh.2  
**E1280X**  
**Cable grip "Flex" (4pz)**

Fin:  
 Grigio  
 Grey  
 Gris

**02**

cm. 50x14xh.9  
**E1290X**  
**Kit elettrificazione "Flex"**  
*"Flex" electrification kit*  
*Kit electrification "Flex"*

Fin:  
 AL  
**Alluminio**  
 Aluminium

**03**

cm. 50x14xh.2  
**E1310X**  
**"LK Top Access"**

Fin: cover "LK Top Access"

|                          |                         |       |
|--------------------------|-------------------------|-------|
| AC                       | RO                      | WE    |
| Acero<br>Maple<br>Erable | Rovere<br>Oak<br>Rouvre | Wengé |

**04**

cm. 50x14xh.9  
**E1320X**  
**Kit elettrificazione "LK"**  
**(top access e marsupio)**  
*"LK" electrification kit (top access and holder)*  
*Kit electrification "LK" (top access et plateau)*





cm. 90x60xh. 72,5  
**S5550G**  
**Allungo scrivania**  
**crystallo**  
*Crystal extension desk*  
*Rallonge plateau verre*



cm. 41,5x54,2xh. 54,5  
**C5100G**  
**Cassettiera tre cassetti**  
**su ruote**  
*3 drawers pedestal on wheels*  
*Caisson 3 tiroirs sur roulettes*



cm. 41,7x54,2xh. 56  
**C0100X**  
**Cassettiera su ruote**  
**con 3 cassetti**  
*3 drawers pedestal on wheels*  
*Caisson 3 tiroirs sur roulettes*



cm. 90x60xh. 72,5  
**S5650G**  
**Allungo scrivania**  
**legno**  
*Wood extension desk*  
*Rallonge plateau bois*

Fin: top



**Bianco Smaltato**  
*Enamelled white*  
*Emaillé blanc*



**Nero Smaltato**  
*Enamelled black*  
*Emaillé noir*

Fin: metal



**Alluminio**  
*Aluminium*



**Bianco**  
*White*  
*Blanc*



**Nero**  
*Black*  
*Noir*

Fin: cassettiera/drawers pedestal/caisson



**Trama Bianco**  
*White weft*  
*Trame blanc*



**Trama grigio**  
*Grey weft*  
*Trame gris*



**Trama nero**  
*Black weft*  
*Trame noir*

Fin: cassettiera/drawers pedestal/caisson



**Trama Bianco**  
*White weft*  
*Trame blanc*



**Acero**  
*Maple*  
*Erable*



**Rovere**  
*Oak*  
*Rouvre*



**Wengé**

Fin: top



**Acero**  
*Maple*  
*Erable*



**Rovere**  
*Oak*  
*Rouvre*



**Wengé**

Fin: metal



**Alluminio**  
*Aluminium*



**Bianco**  
*White*  
*Blanc*



**Nero**  
*Black*  
*Noir*

GIANO METAL  
 la direzione

## le informazioni tecniche

---

### PIANI DI LAVORO

**Cristallo:** vetro float spess. mm.15 smaltato Bianco o Nero (a copertura totale), temprato.

**Wood:** agglomerato ligneo rivestito in melaminico spess.35 mm nelle finiture Acero, Rovere e Wengè, bordato con ABS spess. mm.2.

### STRUTTURA

**Metal:** gambe scatolari in metallo spess. 100mm collegate da trave tubolare Ø48mm.; gambe tubolari 80x80 in metallo per appendici; verniciatura a polveri epossidiche nei colori Grigio Alluminio (RAL9006), Bianco (RAL9010) e Nero (RAL9005). Piedini livellatori.

### CASSETTIERE

**Cassettiere in legno per scrivanie con trave metallica:** realizzate in melaminico (sp.18mm) con top (sp.28 mm) e distanziali che permettono il corretto posizionamento in presenza di trave; finiture: Trama Bianco, Trama Grigio, Trama Nero.

E' possibile utilizzare cassettiere tradizionali, cioè senza distanziali, se posizionate in assenza di trave-scrivania: struttura, top e frontali cassette sono realizzati in melaminico spess.18mm; finiture: Acero, Rovere, Wengè e Trama Bianco.

Su tutti i modelli:

-interno cassette: folden rivestito in colore grigio, guide in metallo (portata 25 Kg.).

-serratura a chiusura simultanea di serie.

Fin: crystal



**Bianco smaltato**  
Enamelled white  
Émaillé blanc

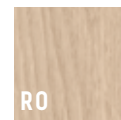
Fin: wood



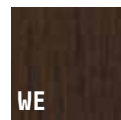
**Nero Smaltato**  
Enamelled black  
Émaillé noir



**Acero**  
Maple  
Erable



**Rovere**  
Oak  
Rouvre



**Wengè**

Fin: metal



**Bianco**  
White  
Blanc



**Nero**  
Black  
Noir



**Alluminio**  
Aluminium

## technical characteristics

---

### WORKTOPS

**Crystal:** 15mm. thick float glass, enamelled white or black, full coverage, tempered.

**Wood:** laminated wood agglomerate (thick 35mm) finished in maple, oak and wengè, lengthwise and with 2mm thick ABS edge-banding.

### STRUCTURE

**Metal:** 100 mm box section metal legs interconnected by Ø48 mm tubular rod. 80x80mm tubular metal legs for the add-on units. Epoxy powder paint finish in Aluminium Grey (RAL9006), White (RAL9010) and Black (RAL9005). Adjustable feets.

### PEDESTALS

**Wood for desks with metal rod:** 18mm. thick structure and drawer fronts. 28mm thick top panel and spacers to allow correct positioning in the presence of beams. Finishes: White weave, Grey weave and Black weave.

It is possible to use traditional drawers, without spacers, if positioned without the beam-desk. Structure, top and front panels are manufactured in melamine laminate, thickness 18m; finishes: Maple, Oak, Wenge and White Weave. All models have:

-drawer interiors: folden lined in grey colour, metal rails (capacity 25 Kg.).

-simultaneous locking system.

## caratteristiche tecniche

---

### PLANE DE TRAVAIL

**Verre:** verre float épaisseur 15mm, émaillé blanc ou noir, à couverture totale, trempé.

**Wood:** aggloméré de bois revêtu en mélaminé (35mm), finition érable, rouvre et wengè, et avec pourtour ABS épaisseur 2 mm.

### STRUCTURE

**Metal:** pieds carrés en métal épaisseur 100mm reliés par une poutre tubulaire Ø48mm; pieds tubulaires 80x80 mm en métal pour éléments terminaux; peinture à poudres époxy coloris Aluminium (RAL9006), Blanc (RAL9010) et Noir (RAL9005).

### CAISSONS

**Wood pour bureaux avec poutre en metal:** structure et devants de tiroir épaisseur 18mm, dessus épaisseur 28 mm, entretoises permettant le positionnement correct en présence d'une poutre. Finition: Trame Blanc, Trame Gris et Trame Noir.

Vous pouvez utiliser des blocs traditionnels, qui est, sans entretoises, si positionné en l'absence de structure de faisceau bureau, haut et façades de tiroirs sont faits de mélamine spess.18mm; finitions: érable, chêne, wengè et trame blanc.

Sur tous les modèles:

-l'intérieur des tiroirs: folden revêtus en gris, rails métalliques (capacité de 25 kg.).

-serrure avec fermeture simultanée.

G I A  
N  
O

---

METAL

93